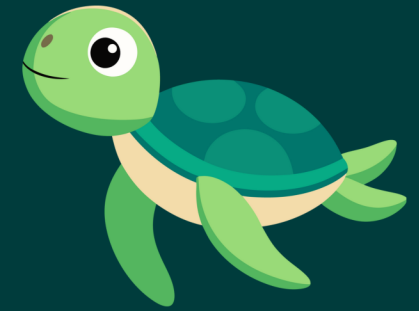


# Stage 4



Monday	Tuesday	Wednesday	Thursday	Friday	Saturday	Sunday
4pm	4pm	4pm	4.30pm	4pm	8.30am	9am
5pm	4.30pm	4.30pm	5.30pm	4.30pm	9am	10am
5.30pm	5pm	5pm	6pm	5pm	9.30am	11am
	5.30pm	5.30pm		5.30pm	10am	
		6pm				